

DRISHTI GUEST HOUSE

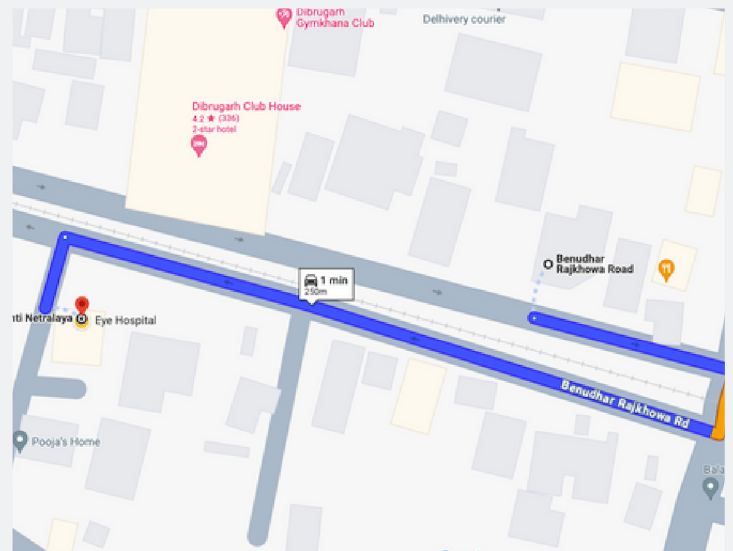
The guest house is a 2-BHK apartment situated opposite Drishti Netralaya, 250 m away from the hospital.

Google Maps: <https://g.co/kgs/1ZWgjaC>

Hospital Address:

Drishti Netralaya
Amolapatty Rly Gate
Dibrugarh, Assam - 786001

<https://maps.app.goo.gl/cmngrywjqzPgi2D89>



Amenities



Furnished

Apartment furnished with a single bed, mattress, cupboard, sofa, and desk.



Hot Water

A geyser has been installed in the bathroom to provide hot water.



Entertainment

The living room has been fitted with a television for your entertainment.



Air Conditioner

The bedroom has an air conditioner



Rental

Kindly inform us in advance if you wish to utilize our accommodation services.

15,000 including Electricity Bill per month

Nearby Grocery Stores, Restaurants

The guest house is close to almost anything you need for a comfortable stay.

There are multiple local kirana stores in the vicinity.





The Drishti Netralaya campus has an on-premises canteen from where you may order food.

Additional options for dining out or ordering

in -

Dominos

Letz Go

Tree Fern

1 BHK

Wingsong Cafe

Atmosphere

KFC



There is a multiplex in Sohum Mall.

Galleria Cinemas Dibrugarh

Reaching Dibrugarh & Drishti

Dibrugarh boasts a domestic airport, Dibrugarh Airport (DIB), and a railway station, Dibrugarh Town (DBRG). For directions, please refer to the Google Maps link provided above.

From the Airport: Our location is approximately 20 km from Dibrugarh Airport. There are plenty of local cab options available from the airport to the hospital.

From the Railway Station: It is about 6.5 km from the Dibrugarh Railway Station - Banipur and a rickshaw ride can be hired.